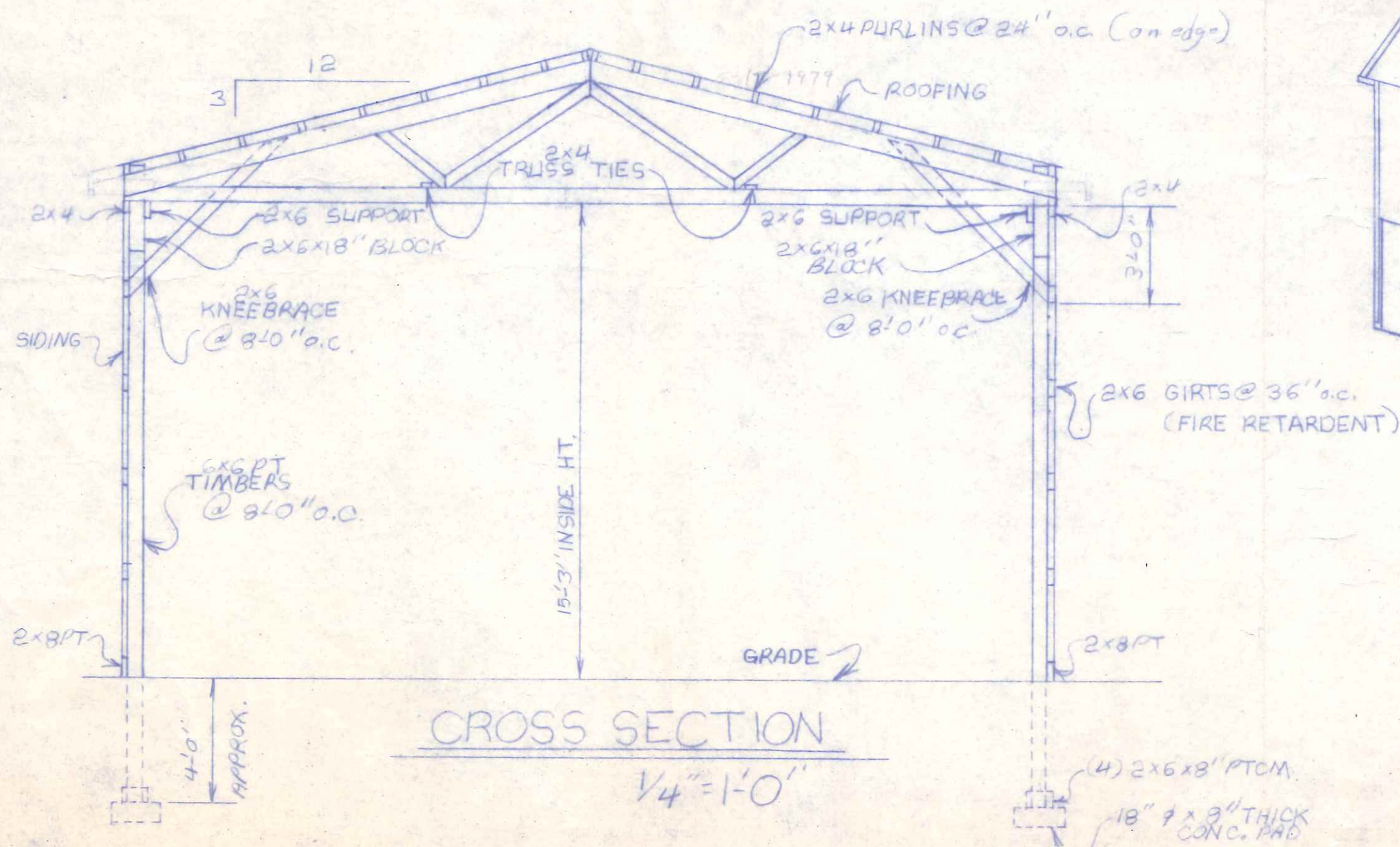


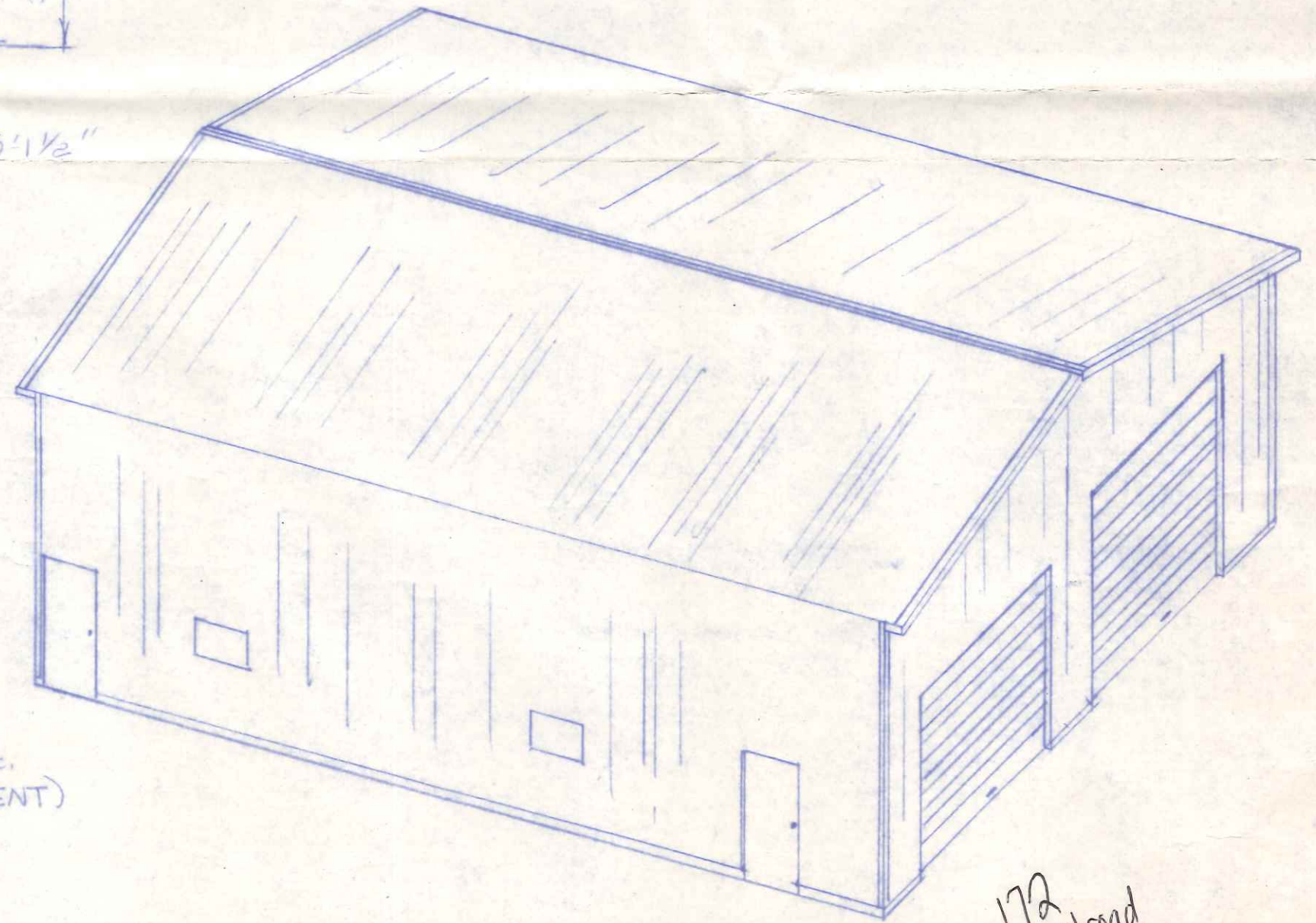
PLAN
3/16" = 1'-0"



CROSS SECTION
1/4" = 1'-0"

NOTES

- 1) DESIGN ROOF LOAD - 25 psf (Live) + 5 psf (Dead)
- 2) ROOFING - PLAIN ALUMINUM
- 3) SIDING - PAINTED ALUMINUM
- 4) ALL GIRTS FIRE RETARDANT
- 5) LUMBER STRESSES - TIMBERS - $F_b = 1250 \text{ psi}$ & $F_c = 725 \text{ psi}$
SUPPORTS - $F_b = 1600 \text{ psi}$
PURLINS & GIRTS - $F_b = 1100 \text{ psi}$
- 6) WINDOWS - (2) 3' x 2'



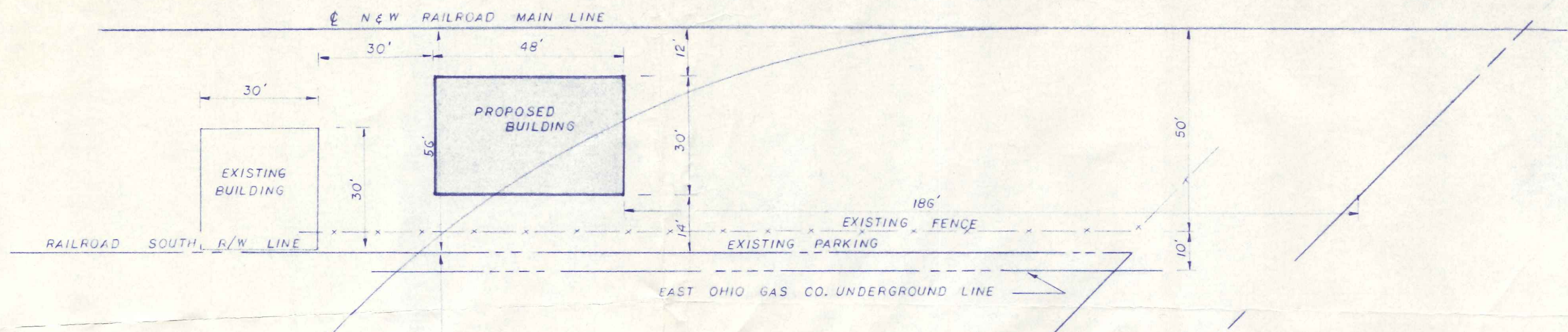
172 Railroad St.



W Wickes Buildings
A DIVISION OF THE WICKES CORPORATION

30'-0" x 48'-0" BUILDING
-FOR-
WOODS AUTO SUPPLY INC. NAPLEON OHIO

APPROVED BY: <i>[Signature]</i>	REVISIONS:	DRAWN BY: <i>B. Perard</i>	JOB NO. 79198
DATE: 10-1-79	REVISIONS:	SCALE:	SHEET 1 OF 1



RAILROAD ST.

WOODS AUTO SUPPLY STORE

YEAGER 3rd. ADD.

OAKWOOD AVE.

N

Scale 1" = 20'

PROPOSED BUILDING LOCATION
 WOOD'S AUTO SUPPLY
 NAPOLEON, OHIO

20

ABANDON RAILROAD SIDING

25'

10'

25'

17

18

19

120'

25'